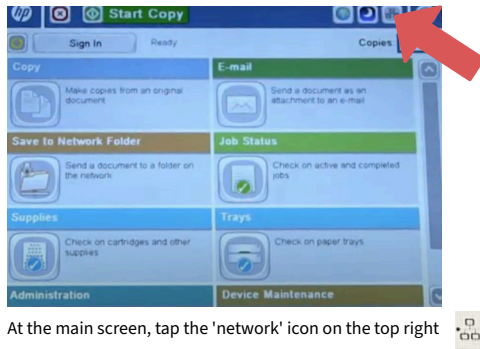
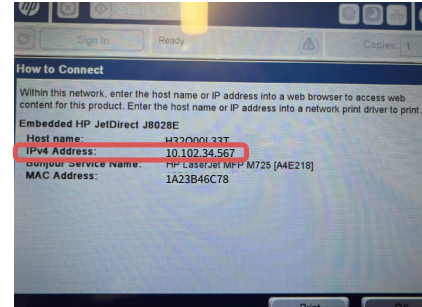


IP Address

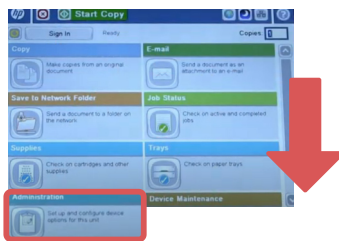


At the main screen, tap the 'network' icon on the top right

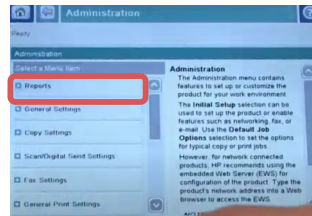


On the screen that appears, locate the 'IPv4 Address.'

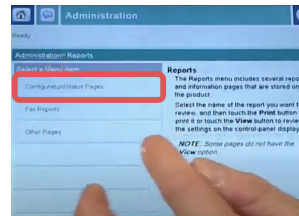
Print Configuration Report



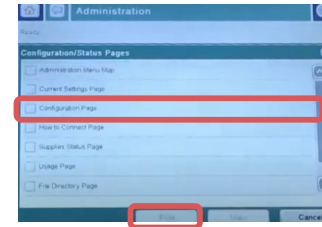
At the main screen, scroll down and tap on 'Administration.'



On the 'Administration' screen, scroll down and select 'Reports.'



Next, select 'Configuration Pages.'



Next, select 'Configuration Page' and then **PRINT**.

